

# **NoHo Restaurant / Retail Opportunity on Bowery** **324 Bowery** **Between Bleecker / Bond**

**932 Rentable Square Feet Ground**

**Venting & Gas Line in Place**

**1,079 Rentable Square Feet Basement**

**Great NoHo Block and Neighborhood**

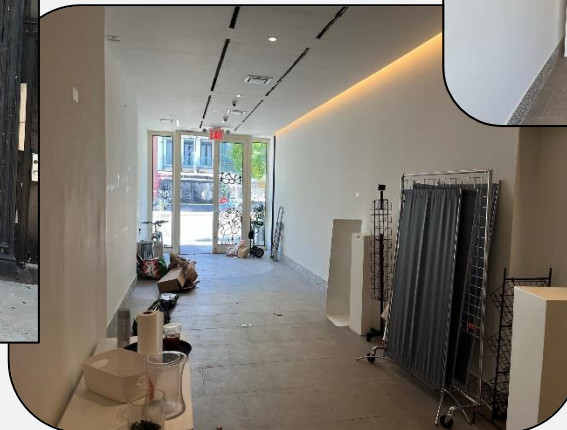
**About 10.5' Ceilings on Ground**

**Asking Rent Upon Request**

Great opportunity in one of the strongest blocks in NoHo/East Village to lease a vented space with gas to create a new restaurant or retail concept. About 12' Frontage on Bowery this space offers high ceilings of about 12', a walk in in the basement and HVAC in place. Great location for QSR or a full service establishment. Available for immediate possession.

## Neighborhood Description

Prime NoHo / East Village neighborhood surrounded by some hip and trendy retail and restaurants. A couple of blocks from Cooper Union and NYU dorms across the street. There is a great mix of residential, commercial and hotels in the area. Neighbors include: Ian Schrager's 40 Bond, The Bowery Hotel, John Varvatos, Think Coffee, Goop, Bar Primi, Kissaki Sushi, , 310 Bowery Bar, Trek Bicycle, Blue & Cream, Chase Bank & More.



**For More Information Please Contact**

**Jeffrey Angel**  
**212-719-7017**

**Jeffrey.angel@resnewyork.com**

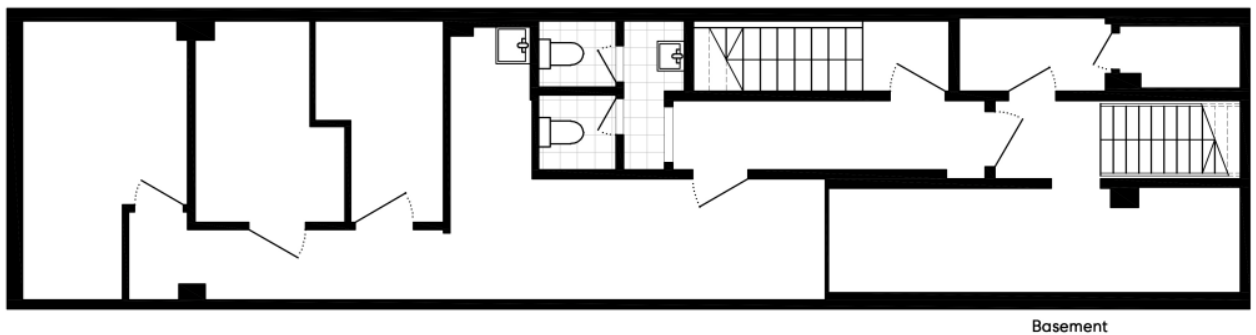
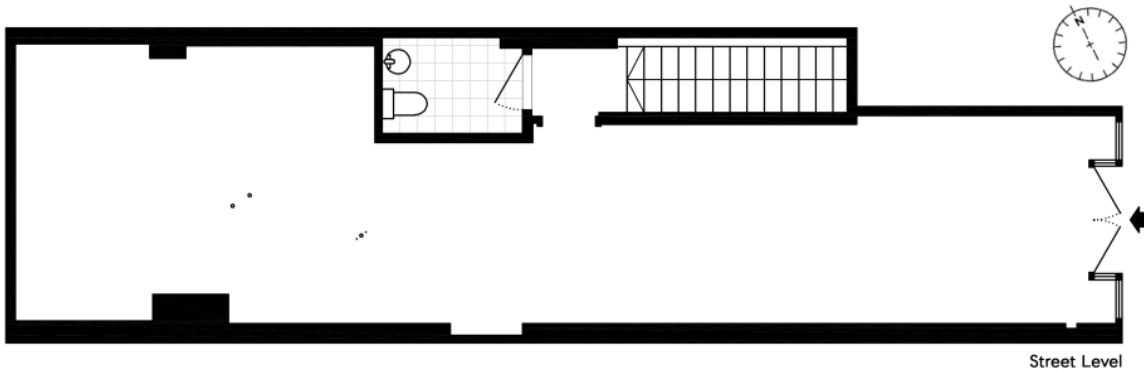


Although the information contained herein has been provided by sources that we deem reliable, we do not guarantee it's accuracy in any way. No expressed nor implied warranties are made as to the accuracy of any/and all of the information contained herein and it should not be relied upon in any way by a prospective tenant. All information contained herein should be independently verified prior to anyone entering into a form of legal binding agreement to purchase, lease or otherwise procure the premises or situation presented herein. All information is subject to change or withdrawal without reason or notice. This flyer may contain errors and/or omissions for which RES, nor the landlord shall be held responsible for in any way.

# ***Floorplan***

## ***324 Bowery***

*(Plan is approximate and not to scale)*



***For More Information Please Contact***

**Jeffrey Angel**  
**212-719-7017**

**Jeffrey.angel@resnewyork.com**



The information contained herein has been provided by sources that we deem reliable. However, no expressed or implied warranties are made as to the accuracy of the information and it should not be relied upon in any way. All information contained herein should be independently verified prior to anyone entering into an form of legal binding agreement to purchase, lease or otherwise procure the premises or situation presented herein. Information is subject to change or withdrawal without notice and may contain errors and/or omissions.