

RES COMMERCIAL CORP IS PLEASE TO PRESENT THIS NEW EXCLUSIVE LISTING...

Washington Heights Retail by Col. Pres Hospital

3900 Broadway

Between 163rd / 164th Streets

925 Square Feet Ground

26' Frontage on Broadway

1,100 Square Feet Basement

Currently La Rosa Wine & Liquors

Asking Rent Upon Request

Close to Columbia Presbyterian Hospital

Prime frontage on a very highly trafficked section of Broadway. Currently operating as La Rosa Wine & Liquors this is a great open retail space with great frontage and a large storage basement. Possession available June 2022.

Tons of traffic being close to Columbia Presbyterian Hospital and the 1 train at 157th Street. Neighbors Include:
**NY Presbyterian Hospital & Columbia University Medical Center ♦ Boxers ♦ McDonald's
Hilltop Park Alehouse ♦ Dunkin' ♦ Super Foodtown ♦ Subway ♦ Wendy's ♦ Chase Bank ♦ TD Bank**



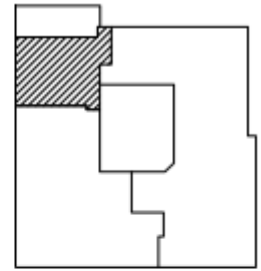
For More Information Please Contact

Jeffrey Angel
212-719-7017

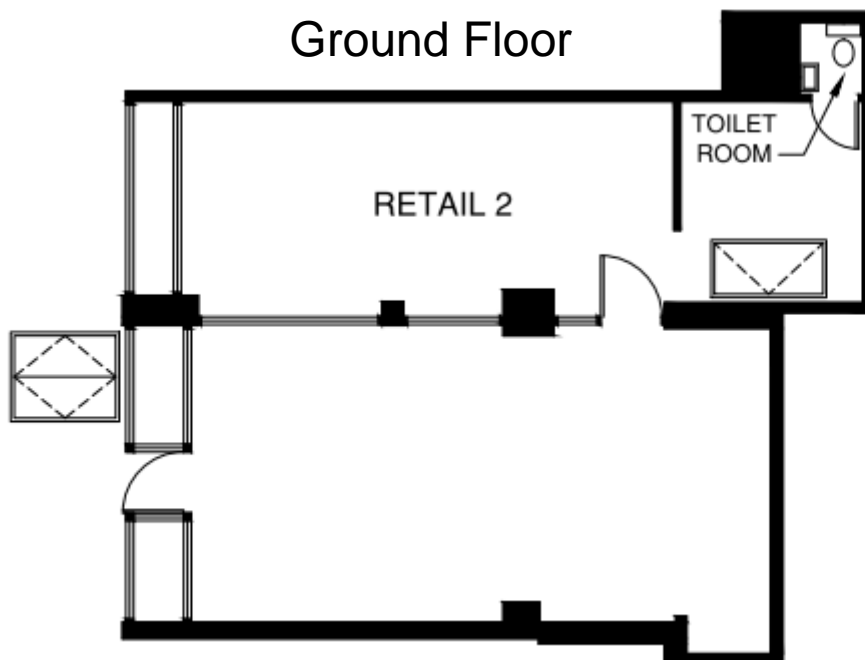


The information contained herein has been provided by sources that we deem reliable. However, no expressed or implied warranties are made as to the accuracy of the information and it should not be relied upon in any way. All information contained herein should be independently verified prior to anyone entering into an form of legal binding agreement to purchase, lease or otherwise procure the premises or situation presented herein. Information is subject to change or withdrawal without notice and may contain errors and/or omissions.

3900 Broadway Floorplan



KEY PLAN



For More Information Please Contact

**Jeffrey Angel
212-719-7017**



The information contained herein has been provided by sources that we deem reliable. However, no expressed or implied warranties are made as to the accuracy of the information and it should not be relied upon in any way. All information contained herein should be independently verified prior to anyone entering into an form of legal binding agreement to purchase, lease or otherwise procure the premises or situation presented herein. Information is subject to change or withdrawal without notice and may contain errors and/or omissions.

3900 Broadway

Area Description

Fantastic neighborhood on the rise with 7 day a week traffic and growing income level and density. Neighbors include:
NY Presbyterian Hospital (with the Morgan Stanley Children's Hospital) & Columbia University Medical Center
 GoGo – Gi ♦ Bank of America ♦ Super Foodtown ♦ Subway ♦ Wendy's ♦ Chase Bank ♦ TD Bank



Demographic Highlights – Zip 10032

Total Population: 59,069
 Female Population: 50.4%
 Male Population: 49.6%
 Median Age: 34.6
 Median Age of Males: 32.3
 Median Age of Females: 36.7
 Average Annual Household Income: \$49,670
 Housing Units: 21,208
 Households w/ Kids: 27.3%
 Source – www.propertyshark.com

168th Street Station (www.mta.info) 1 A C

Avg Weekday Ridership 2019 – 20,079
 Avg Annual Ridership 2019 – 6,156,288
 Avg Weekend Ridership 2019 – 19,246

157th Street Station (www.mta.info) 1

Avg Weekday Ridership 2019 – 12,042
 Avg Annual Ridership 2019 – 3,739,786
 Avg Weekend Ridership 2019 – 12,229



For More Information Please Contact

Jeffrey Angel
212-719-7017



The information contained herein has been provided by sources that we deem reliable. However, no expressed or implied warranties are made as to the accuracy of the information and it should not be relied upon in any way. All information contained herein should be independently verified prior to anyone entering into an form of legal binding agreement to purchase, lease or otherwise procure the premises or situation presented herein. Information is subject to change or withdrawal without notice and may contain errors and/or omissions.