

# **Hell's Kitchen Restaurant / Retail Opportunity**

**693 Ninth Avenue  
Between 47<sup>th</sup> / 48<sup>th</sup> Streets**

**925 Square Feet Ground** (Approximately)

**Walk in and Storage in Basement**

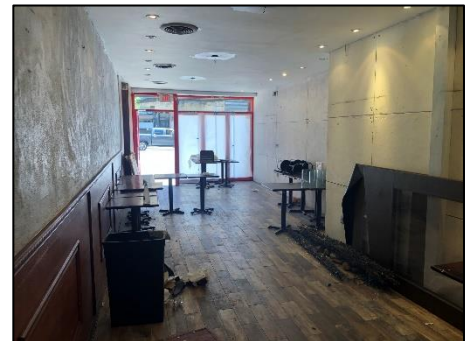
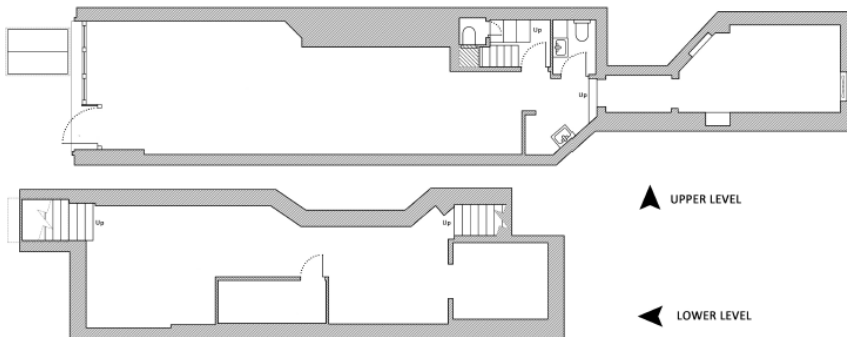
**Fully Fixtured & Vented For Restaurant**

**Possession Immediate**

**Prime Section of Hell's Kitchen**

**Asking Rent Upon Request**

An amazing opportunity to lease a fully equipped and fixtured restaurant for new direct lease!. The space is about 925 square feet on the ground plus about 635 sf in the basement. About 14' Frontage and previously had seating for about 40-45 w/ a small bar area. Restroom and a kitchen on the ground floor along with some contiguous basement complete with a walk-in, storage, office and access to the street from a hatch for deliveries. Previously a full on-premises liquor license in place.



**For More Information Please Contact**

**Jeffrey Angel  
212-719-7017**

**Jeffrey.angel@resnewyork.com**

**Cara Santamaria  
917-833-4427**

**Cara@resnewyork.com**



Although the information contained herein has been provided by sources that we deem reliable, we do not guarantee it's accuracy in any way. No expressed nor implied warranties are made as to the accuracy of any/and all of the information contained herein and it should not be relied upon in any way by a prospective tenant. All information contained herein should be independently verified prior to anyone entering into a form of legal binding agreement to purchase, lease or otherwise procure the premises or situation presented herein. All information is subject to change or withdrawal without reason or notice. This flyer may contain errors and/or omissions for which RES, nor the landlord shall be held responsible for in any way.

# Neighborhood Information

## 693 Ninth Avenue

Prime block in the heart of Hell's Kitchen. This area offers great 24/7 traffic fueled by a great mix of residential in the neighborhood, offices buildings like World Wide Plaza close by and being close to the Theater District a block over to the East. Neighbors on the block include: Kiehl's • Mickey Spillane's • Qi • Fuel • Lilly's Duane Reade • Otto's Tacos • Dunkin' Donuts • Mom's Kitchen • Mario's Pizza • Amarone Room Service • Tabouleh • Galaxy Diner • Ninth Avenue Vintners • and many more.



For More Information Please Contact

**Jeffrey Angel**  
212-719-7017

[Jeffrey.angel@resnewyork.com](mailto:Jeffrey.angel@resnewyork.com)

**Cara Santamaria**  
917-833-4427

[Cara@resnewyork.com](mailto:Cara@resnewyork.com)



Although the information contained herein has been provided by sources that we deem reliable, we do not guarantee it's accuracy in any way. No expressed nor implied warranties are made as to the accuracy of any/and all of the information contained herein and it should not be relied upon in any way by a prospective tenant. All information contained herein should be independently verified prior to anyone entering into a form of legal binding agreement to purchase, lease or otherwise procure the premises or situation presented herein. All information is subject to change or withdrawal without reason or notice. This flyer may contain errors and/or omissions for which RES, nor the landlord shall be held responsible for in any way.