

**Prime NoLita / Little Italy Restaurant Available**  
**384 Broome Street**  
**Between Mulberry / Mott Streets**  
**Currently Sal's Pizza**

**Approximately 1,420 sf on Ground**

**High Traffic Location**

**Approximately 700 sf in Basement**

**Large Dining Room in Rear**

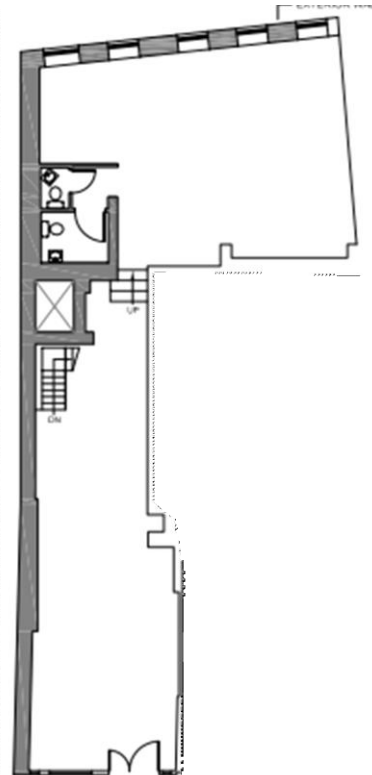
**Fully Vented for Food Use**

**Venting & Gas in Place**

**Asking Rent Upon Request**

**Great Frontage Just Off Mulberry**

This is a prime restaurant / quick service opportunity located just off of Mulberry Street where NoLita meets Little Italy. The space offers a fully vented restaurant situation that was previous setup as a pizzeria with a large dining room in the rear along with the counter and oven area in front. Possession available immediately.



**For More Information Please Contact**  
**Jeffrey Angel**  
**212-719-7017**  
**Jeffrey.angel@resnewyork.com**



The information contained herein has been provided by sources that we deem reliable. However, no expressed or implied warranties are made as to the accuracy of the information and it should not be relied upon in any way. All information contained herein should be independently verified prior to anyone entering into an form of legal binding agreement to purchase, lease or otherwise procure the premises or situation presented herein. Information is subject to change or withdrawal without notice and may contain errors and/or omissions.

# Neighborhood Information

## 384 Broome Street

Very high trafficked intersection where Little Italy meets Nolita with both tourists and locals in the area. Amazing new places opening up nearby like Seamore's on the corner of Mulberry, Mimi Cheng's Dumplings, Cha Cha Matcha and Greekologies recently opening in the area. Great 7 day a week location.

Neighbors include: Seamore's Restaurant • Café Roma • Mimi's Dumplings • Grotta Azzura Ristorante Sweetgreens • Mo Il Gelato • Wild Ginger • Greekologies • Cha Cha Matcha • Soho Strength Lab

SOHOSTRENGTHLAB

sweetgreen

Wild Ginger  
Pan-Asian Vegan Specialties

Caffè Roma  
FINE ITALIAN PASTRIES



MIMI CHENG'S  
dumplings



For More Information Please Contact

**Jeffrey Angel**

**212-719-7017**

**Jeffrey.angel@resnewyork.com**

R·E·S

Although the information contained herein has been provided by sources that we deem reliable, we do not guarantee its accuracy in any way. No expressed nor implied warranties are made as to the accuracy of any/and all of the information contained herein and it should not be relied upon in any way by a prospective tenant. All information contained herein should be independently verified prior to anyone entering into a form of legal binding agreement to purchase, lease or otherwise procure the premises or situation presented herein. All information is subject to change or withdrawal without reason or notice. This flyer may contain errors and/or omissions for which RES, nor the landlord shall be held responsible for in any way.