

Move in Ready Retail or Office Available At the Crossroads of Lower East Side & Chinatown 119A Hester Street Between Forsyth / Eldridge Streets

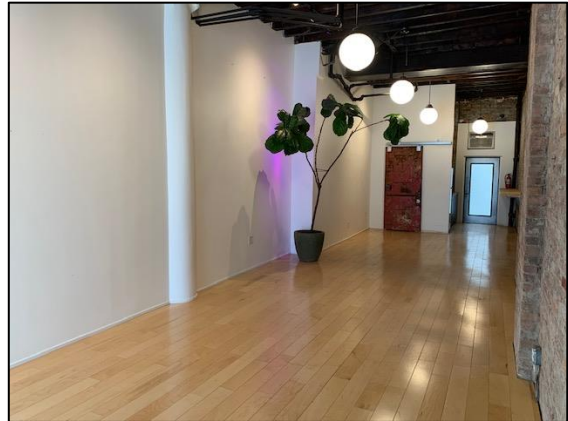
Immaculate space previously used as an office on a very highly trafficked street. Open floorplan with wood floors, wood beam ceiling, exposed brick, street frontage display box, high ceilings and comes with the use of the rear yard. Bathroom and AC in place and about 10' of frontage on Hester. Can be combined with a usable 1,200 sf lower level available in the building at a discounted rent. Ideal for an Office use, Salon/Spa, Gallery, Office, Retail or any other use.

Approximately 725 Square Feet

Useable Rear Yard Space

Pristine Office/Retail Space

Asking Rent - \$4,500 /mo



Very highly trafficked street. Directly across the street from two High Schools plus a Middle School with a total of about 1,300 students in the building. Great traffic with tons of people going to and from Sara Roosevelt park and the schools across the street.

Neighbors include: Sara Roosevelt Park, • YMCA • International Chinese School • Intermediate School 131 • Pace High School • Hester Pizza • Hou Yi Hot Pot • T-Mobile • Nuan Xin Rice Roll & More.

For More Information Please Contact

***Jeffrey Angel
212-719-7017***



* There are no representations as to the working condition nor legality of any hood, venting or other form of equipment remaining the space by any party associated with this property. The information contained herein has been provided by sources that we deem reliable. However, no expressed or implied warranties are made as to the accuracy of the information and it should not be relied upon in any way. All information contained herein should be independently verified prior to anyone entering into an form of legal binding agreement to purchase, lease or otherwise procure the premises or situation presented herein. Information is subject to change or withdrawal without notice and may contain errors and/or omissions.