

Prime Broadway Corner in Washington Heights

3856 Broadway

S/E/C of 161st Street

1,850 Square Feet Ground

Prime Corner Frontage on Broadway

1,275 Square Feet Basement

All Types of Uses Considered

Asking Rent Upon Request

Close to Columbia Presbyterian Hospital

Prime corner location on the Southeast corner of 161st Street and Broadway with great visibility and exposure. Previously a deli/grocery the space was cleaned up and ready for new tenant installation. With a solid corner frontage of about 60' the space L's to provide good back of the house space with about 13' ceilings. This corner comes with a lower level space of about 1,275 square feet that is currently noncontiguous access by full staircase on the side of the building.

Tons of traffic being close to Columbia Presbyterian Hospital and the 1 train at 157th Street. Neighbors Include:
**NY Presbyterian Hospital & Columbia University Medical Center ♦ Boxers ♦ McDonald's
Hilltop Park Alehouse ♦ Dunkin ♦ Super Foodtown ♦ Subway ♦ Wendy's ♦ Chase Bank ♦ TD Bank**



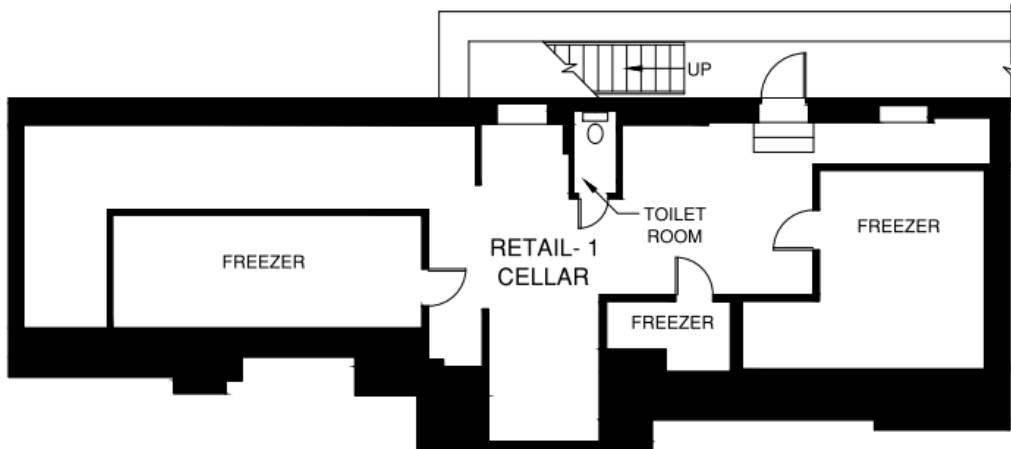
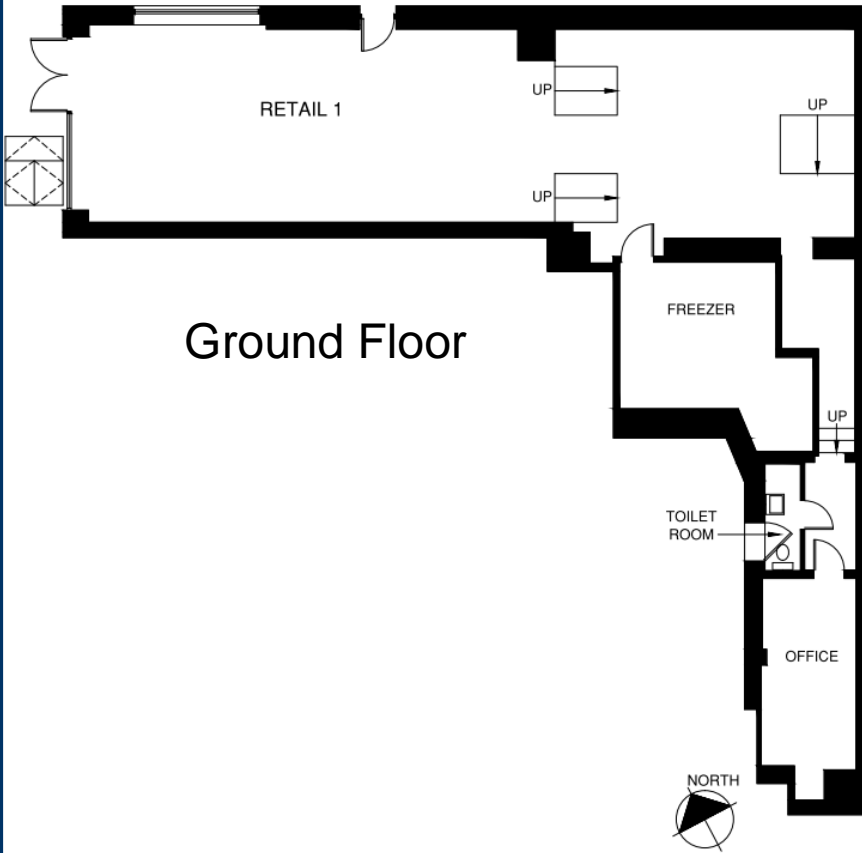
For More Information Please Contact

Jeffrey Angel
212-719-7017



3856 Broadway

Floorplan



Basement

For More Information Please Contact

Jeffrey Angel
212-719-7017



The information contained herein has been provided by sources that we deem reliable. However, no expressed or implied warranties are made as to the accuracy of the information and it should not be relied upon in any way. All information contained herein should be independently verified prior to anyone entering into an form of legal binding agreement to purchase, lease or otherwise procure the premises or situation presented herein. Information is subject to change or withdrawal without notice and may contain errors and/or omissions.

3856 Broadway

Area Description

Fantastic neighborhood on the rise with 7 day a week traffic and growing income level and density. Neighbors include:
NY Presbyterian Hospital (with the Morgan Stanley Children's Hospital) & Columbia University Medical Center
Hilltop Park Alehouse ♦ Bank of America ♦ Super Foodtown ♦ Subway ♦ Wendy's ♦ Chase Bank ♦ TD Bank



Demographic Highlights – Zip 10032

Total Population: 59,069
Female Population: 50.4%
Male Population: 49.6%
Median Age: 34.6
Median Age of Males: 32.3
Median Age of Females: 36.7
Average Annual Household Income: \$49,670
Housing Units: 21,208
Households w/ Kids: 27.3%
Source – www.propertyshark.com

168th Street Station (www.mta.info) 1 A C

Avg Weekday Ridership 2018 – 26,138
Avg Annual Ridership 2018 – 8,150,537
Avg Weekend Ridership 2018 – 27,468

157th Street Station (www.mta.info) 1

Avg Weekday Ridership 2018 – 11,036
Avg Annual Ridership 2018 – 3,514,522
Avg Weekend Ridership 2018 – 12,999

For More Information Please Contact

Jeffrey Angel
212-719-7017



The information contained herein has been provided by sources that we deem reliable. However, no expressed or implied warranties are made as to the accuracy of the information and it should not be relied upon in any way. All information contained herein should be independently verified prior to anyone entering into an form of legal binding agreement to purchase, lease or otherwise procure the premises or situation presented herein. Information is subject to change or withdrawal without notice and may contain errors and/or omissions.