

Prime Flatiron 2nd Floor Retail Available

684 Sixth Avenue

Between 21st / 22nd Streets

925 Square Feet 2nd Floor

Rear Outdoor Deck

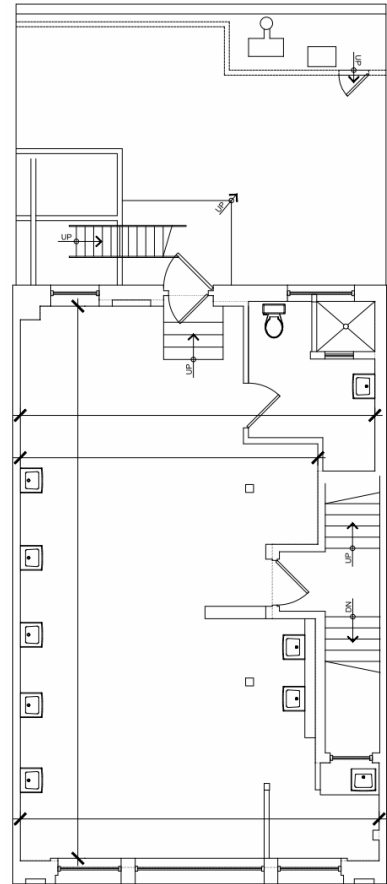
Prime 2nd Floor Exposure

Currently Built Hair Salon

25' Window Frontage

Asking Rent Upon Request

Fantastic exposure right by the 23rd & 6th Avenue subway station and 7 day a week traffic. Built as a hair salon along with a large outdoor deck located off the rear of the floor, it's move in ready for a similar use with wood floors, brick walls and open area. About 25' of 2nd floor window frontage facing 6th Avenue provide excellent exposure. Ideal for a hair/nail salon, office, fitness or other type of use that can capitalize on the huge traffic and location in the heart of the Flatiron District. Possession January 2019.



For More Information Please Contact

Jeffrey Angel

212-719-7017

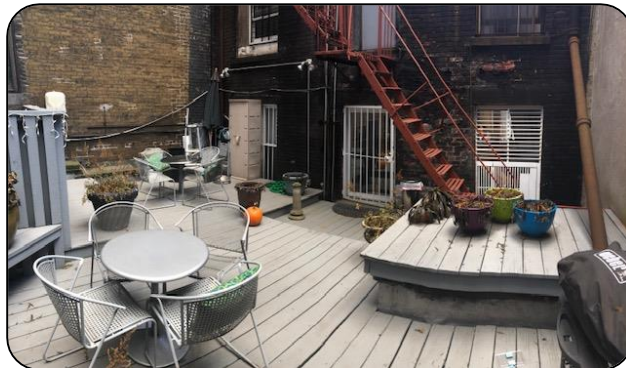
Jeffrey.angel@resnewyork.com



Although the information contained herein has been provided by sources that we deem reliable, we do not guarantee its accuracy in any way. No expressed nor implied warranties are made as to the accuracy of any/all of the information contained herein and it should not be relied upon in any way by a prospective tenant. All information contained herein should be independently verified prior to anyone entering into a form of legal binding agreement to purchase, lease or otherwise procure the premises or situation presented herein. All information is subject to change or withdrawal without reason or notice. This flyer may contain errors and/or omissions for which RES, nor the landlord shall be held responsible for in any way.

684 Sixth Avenue

Interior Photos



For More Information Please Contact

Jeffrey Angel

212-719-7017

Jeffrey.angel@resnewyork.com



Although the information contained herein has been provided by sources that we deem reliable, we do not guarantee its accuracy in any way. No expressed nor implied warranties are made as to the accuracy of any/and all of the information contained herein and it should not be relied upon in any way by a prospective tenant. All information contained herein should be independently verified prior to anyone entering into a form of legal binding agreement to purchase, lease or otherwise procure the premises or situation presented herein. All information is subject to change or withdrawal without reason or notice. This flyer may contain errors and/or omissions for which RES, nor the landlord shall be held responsible for in any way.

Retail Map

684 Sixth Avenue

Great Flatiron location just off of the F, M and PATH trains on 23rd Street. Located amongst a great mix of residential, office and retail located in the immediate area offering a 7 day a week location.

Neighbors Include:

Bed Bath & Beyond ♦ **Old Navy** ♦ **Starbucks** ♦ **McDonald's** ♦ **The Juice Shop**
Trader Joe's ♦ **Chipotle** ♦ **Best Buy** ♦ **Wework** ♦ **Chase Bank** ♦ **And More**



BED BATH & BEYOND



CHASE



Marshalls

OLD NAVY

wework

LOWE'S



For More Information Please Contact

Jeffrey Angel
212-719-7017

Jeffrey.angel@resnewyork.com



Although the information contained herein has been provided by sources that we deem reliable, we do not guarantee its accuracy in any way. No expressed nor implied warranties are made as to the accuracy of any/and all of the information contained herein and it should not be relied upon in any way by a prospective tenant. All information contained herein should be independently verified prior to anyone entering into a form of legal binding agreement to purchase, lease or otherwise procure the premises or situation presented herein. All information is subject to change or withdrawal without reason or notice. This flyer may contain errors and/or omissions for which RES, nor the landlord shall be held responsible for in any way.